



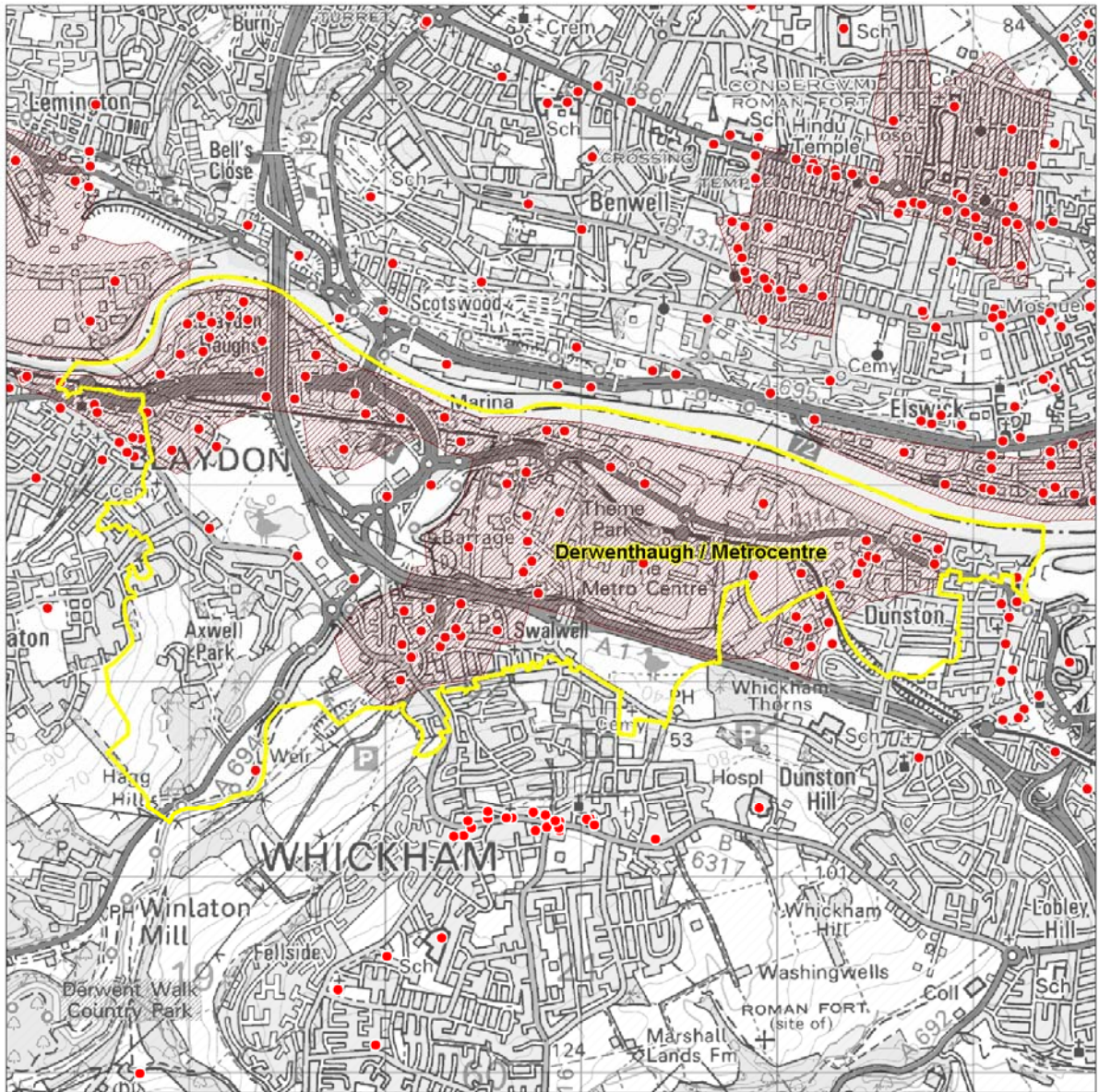
NORTH EAST
R E G I O N A L
I N F O R M A T I O N
P A R T N E R S H I P

Economic Geography of the North East (EGOTNE)

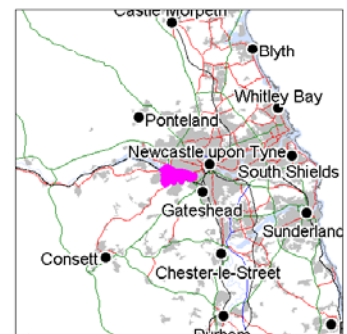
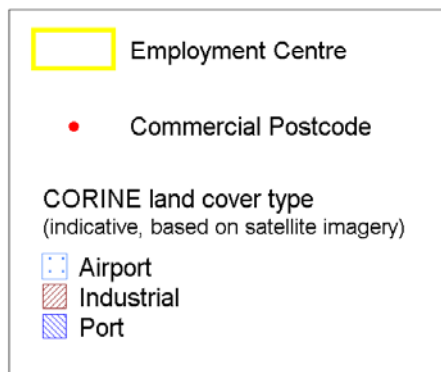
Employment Centre Profile

Derwenthaugh / Metrocentre

See the *EGotNE Users Guide* for reference



Employment centre detail

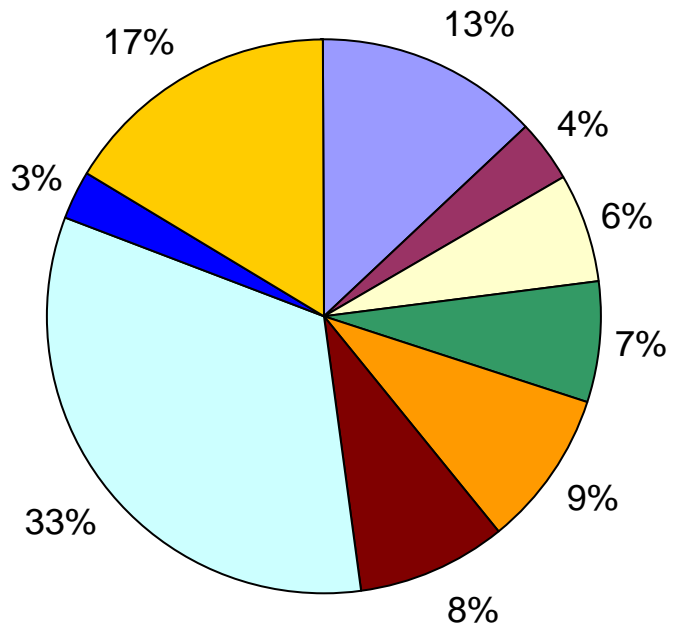


CORINE 2001 data kindly supplied by the Centre for Ecology and Hydrology

© Crown Copyright and database right 2009.
 All rights reserved.
 Ordnance Survey Licence number 100029276.

Industrial Structure

- Managers & Senior Officials
- Professional
- Associate Professional & Technical
- Administrative & Secretarial
- Skilled Trades
- Plant, Process & Machine Operatives
- Sales & Customer Service
- Personal Service
- Elementary



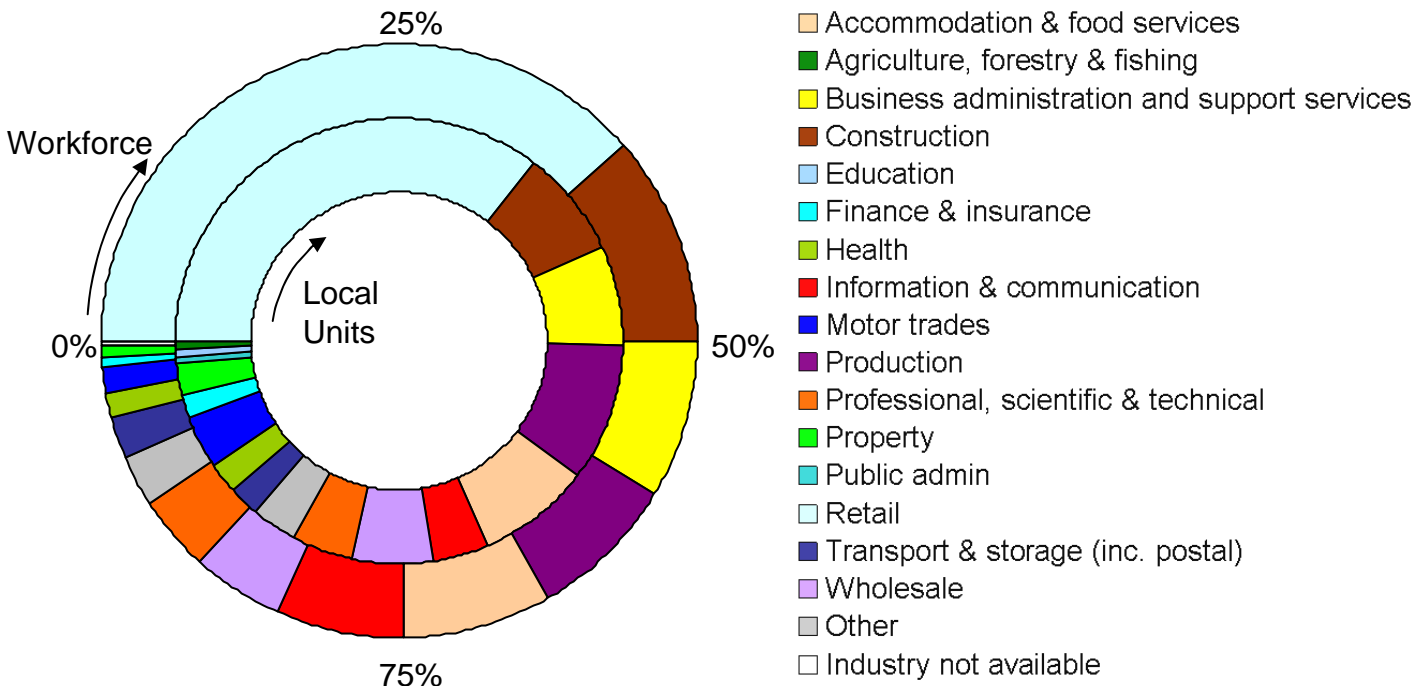
Workforce, by Standard Occupational Classification

(Source: Census 2001 commuting data)

Local units and workforce, by Broad Industry Group

(Source: Inter-Departmental Business Register, 2009)

Local Units: 905 Workforce: 17832

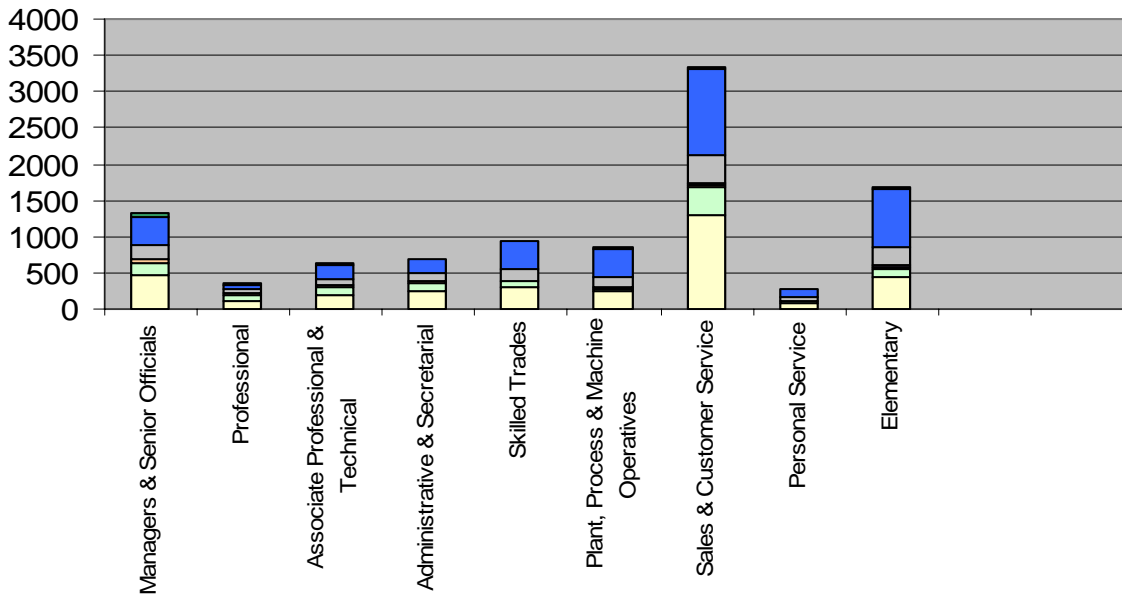


Links To Residential Areas

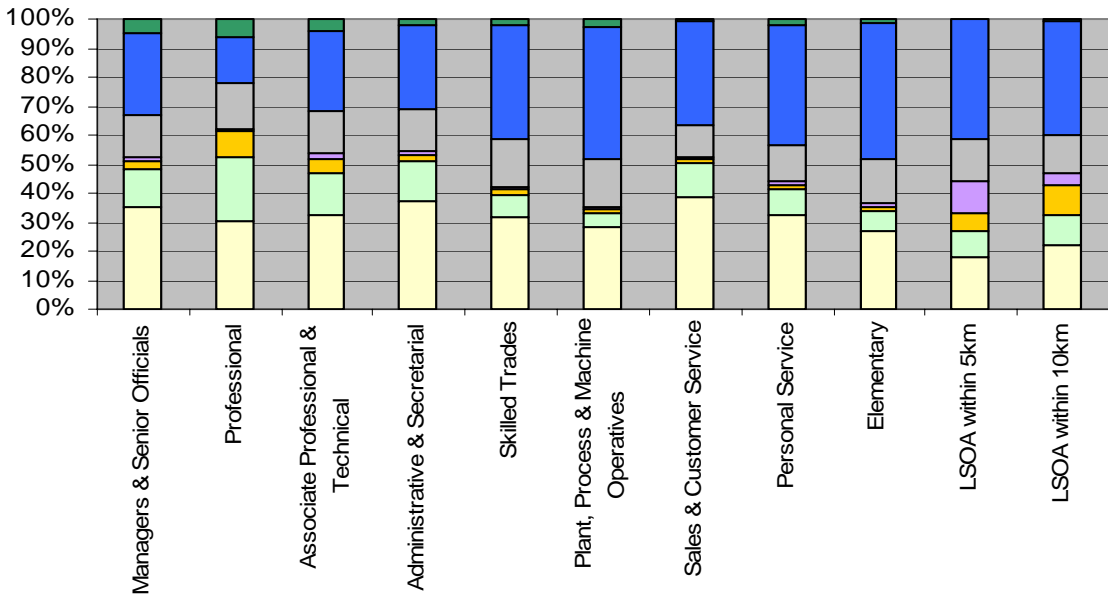
Workforce Residential Area Type, by Standard Occupational Classification

(Sources: Census 2001 commuting data, ONS Area Classifications)

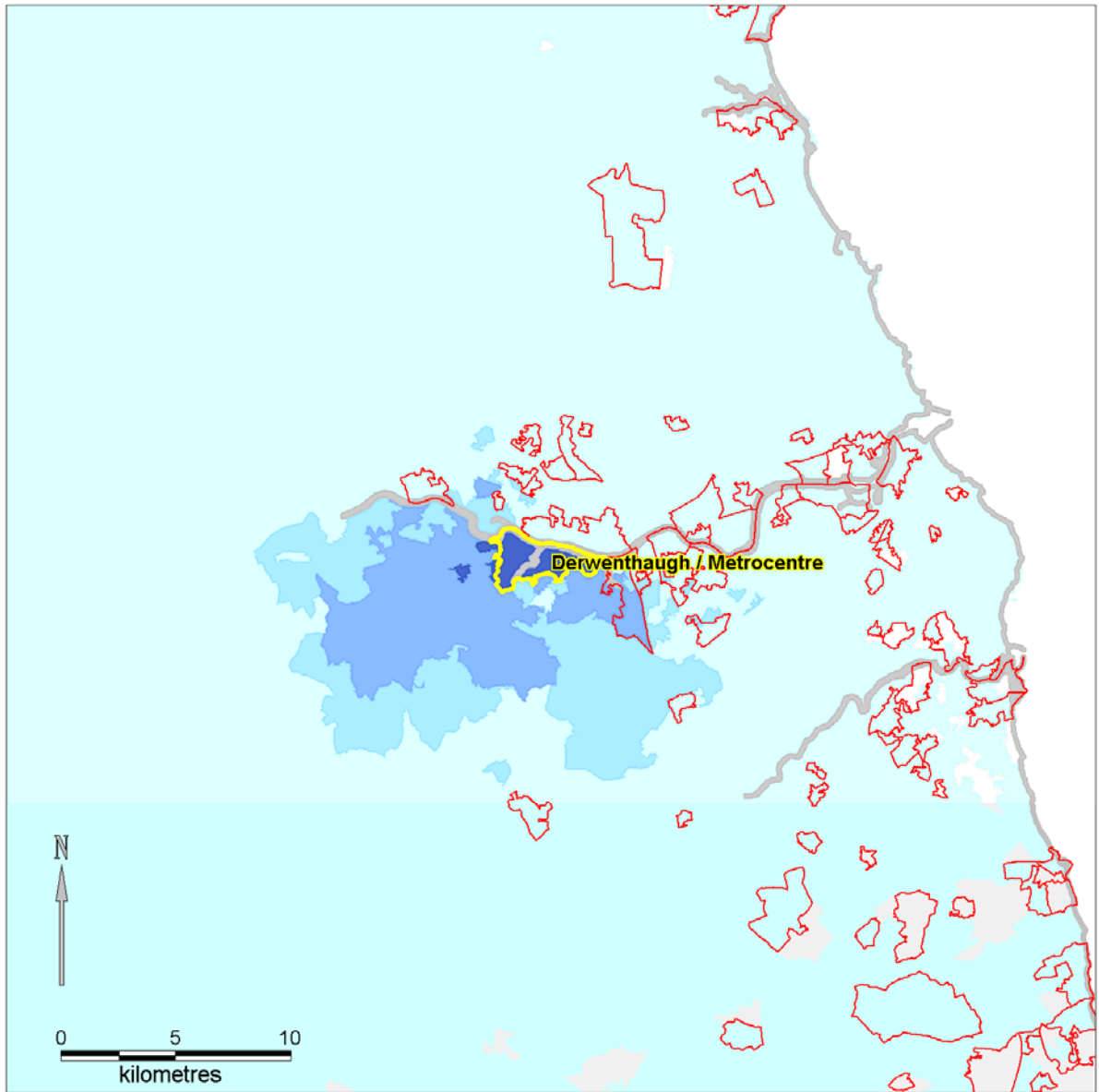
- Countryside
- Disadvantaged Urban Communities
- Miscellaneous built up areas
- Multicultural City Life
- Professional City Life
- Urban Fringe
- White Collar Urban



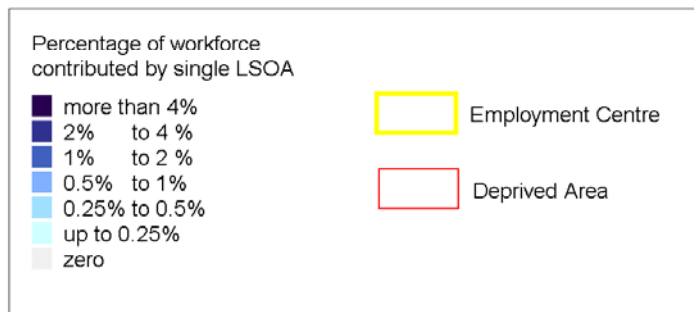
Count of workers

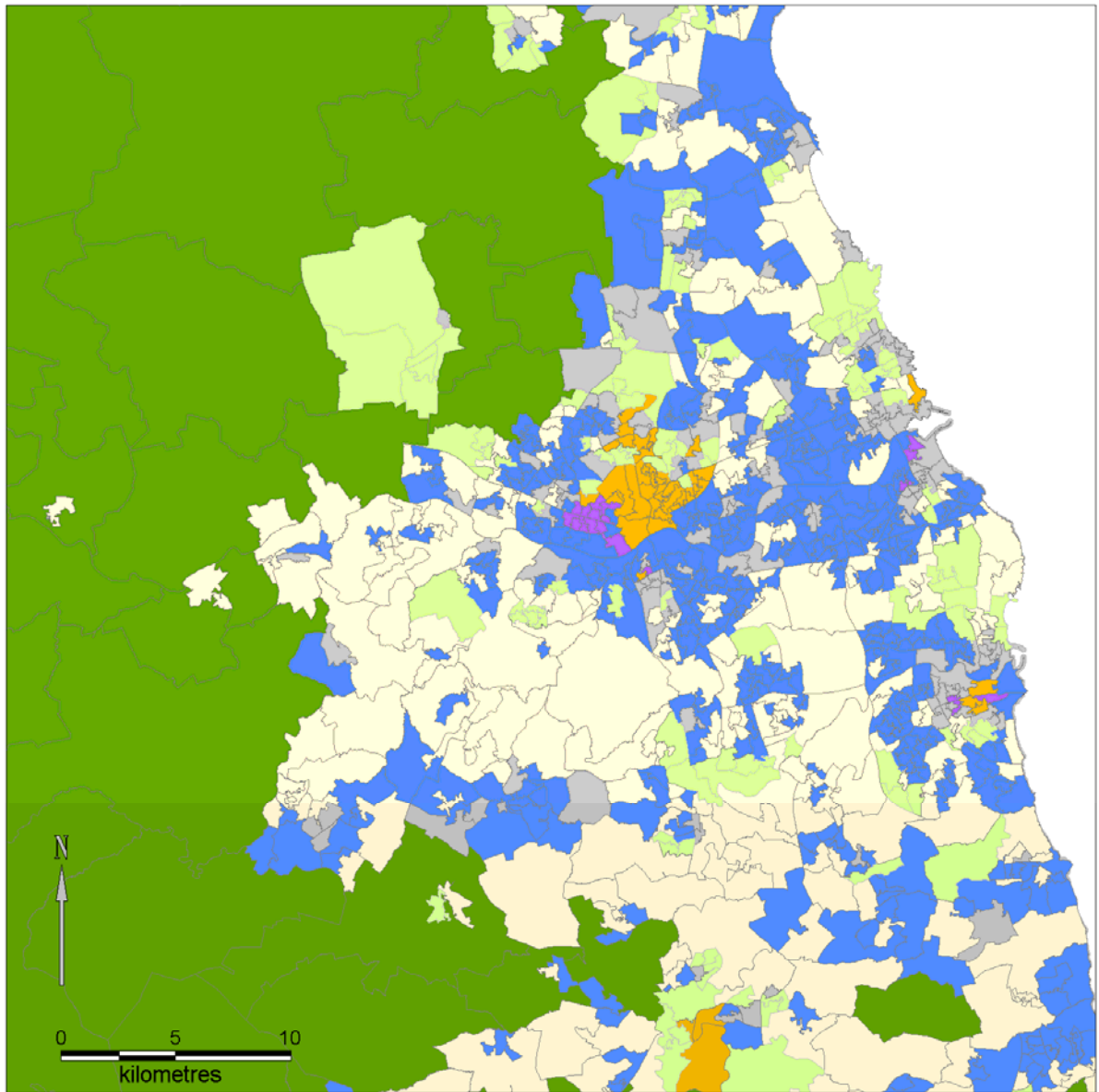


% of workers in SOC \ nearby LSOA

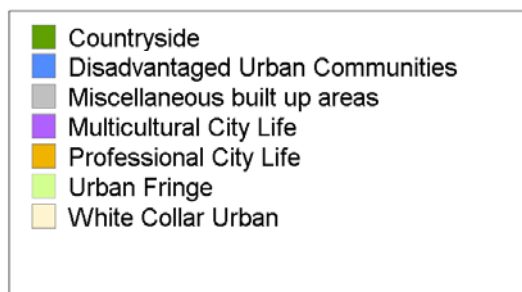


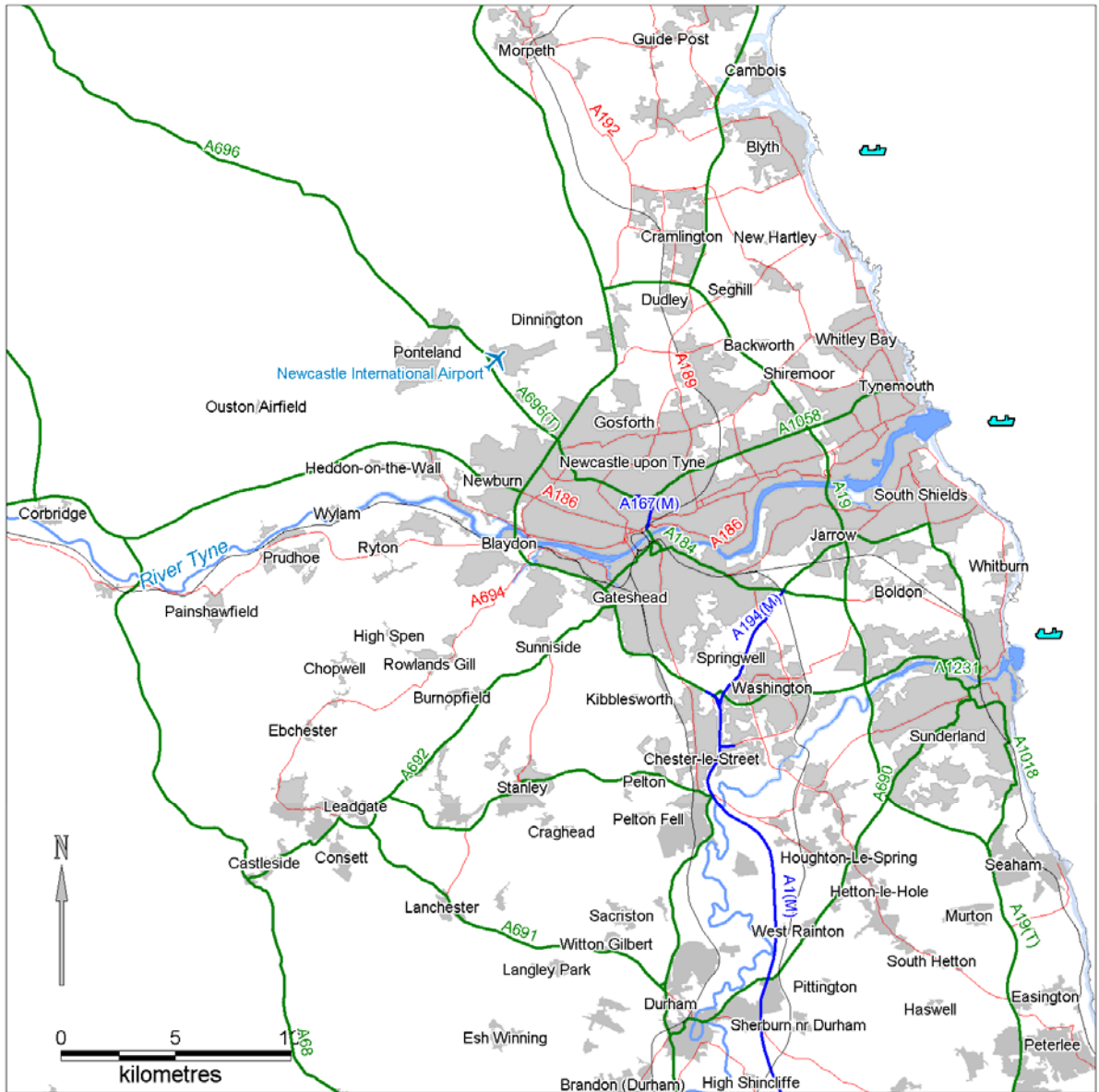
Commuting footprint of employment centre





ONS Area Classifications (supergroup level)





Context and Key Locations

