



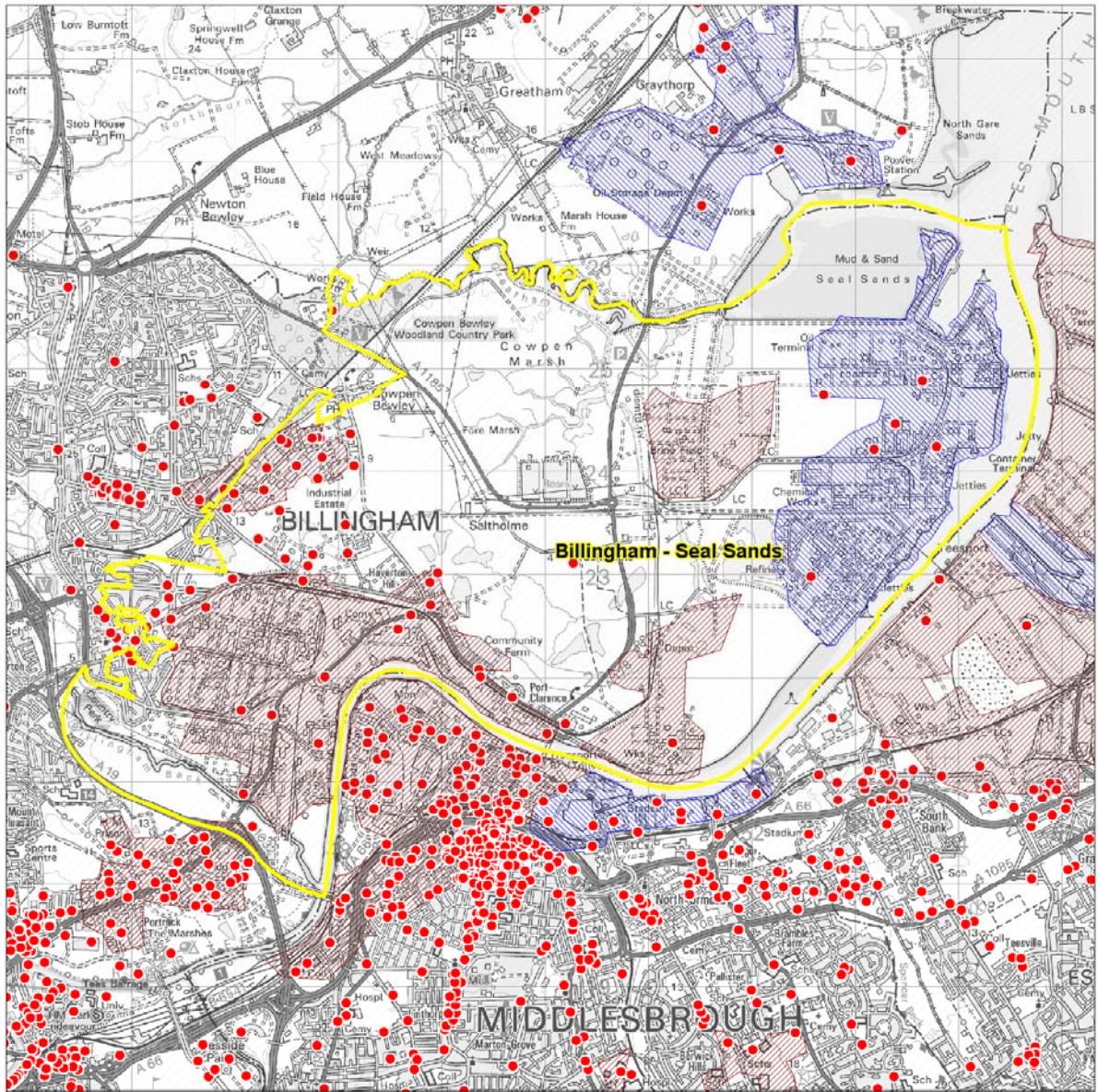
NORTH EAST  
REGIONAL  
INFORMATION  
PARTNERSHIP

# Economic Geography of the North East (EGOTNE)

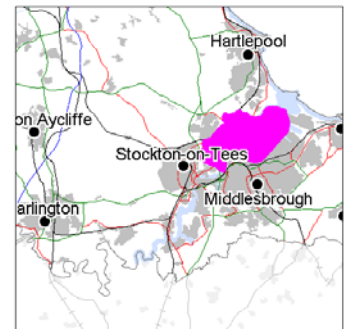
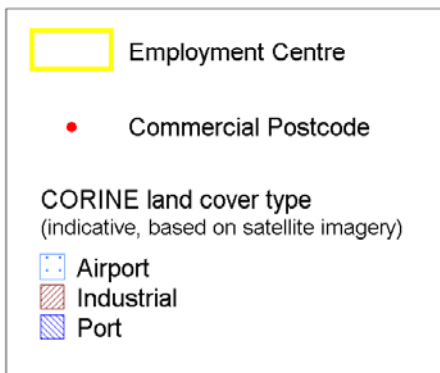
## Employment Centre Profile

### *Billingham - Seal Sands*

See the *EGotNE Users Guide* for reference



## Employment centre detail

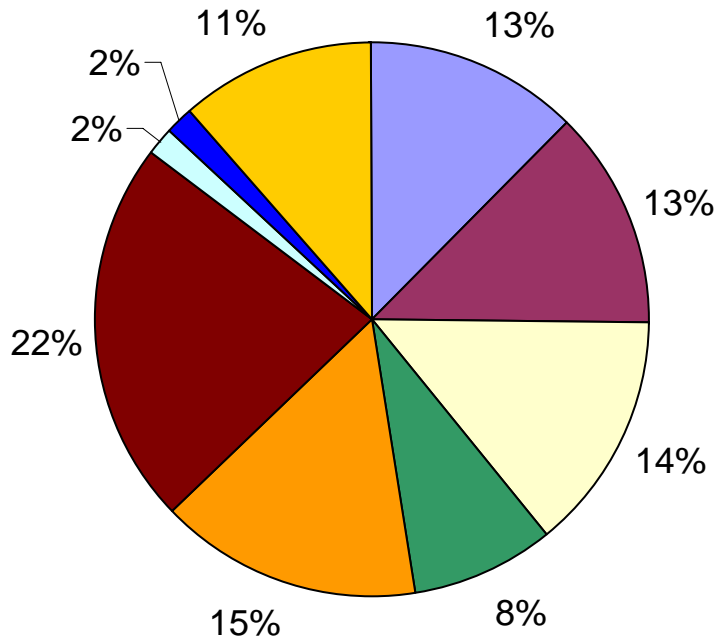


CORINE 2001 data kindly supplied by the Centre for Ecology and Hydrology

© Crown Copyright and database right 2009.  
All rights reserved.  
Ordnance Survey Licence number 100029276.

# Industrial Structure

- Managers & Senior Officials
- Professional
- Associate Professional & Technical
- Administrative & Secretarial
- Skilled Trades
- Plant, Process & Machine Operatives
- Sales & Customer Service
- Personal Service
- Elementary



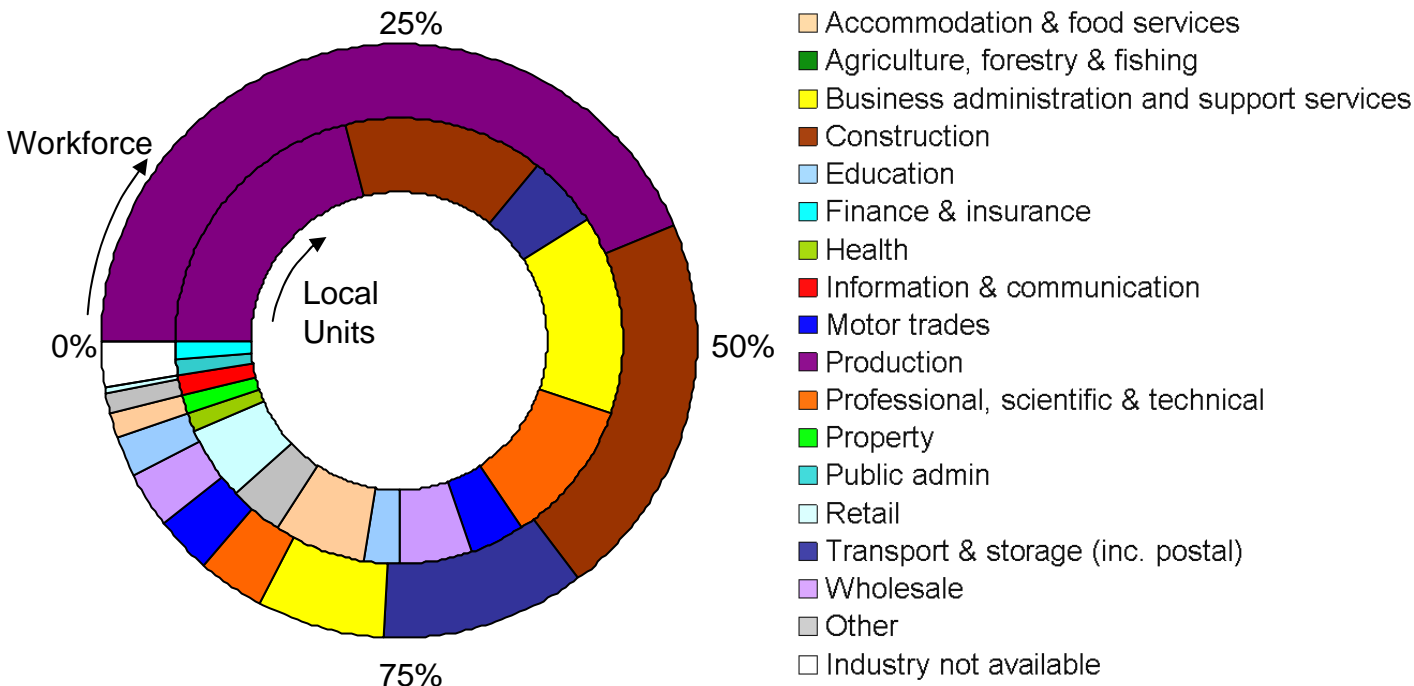
## Workforce, by Standard Occupational Classification

(Source: Census 2001 commuting data)

## Local units and workforce, by Broad Industry Group

(Source: Inter-Departmental Business Register, 2009)

Local Units: 380    Workforce: 9604

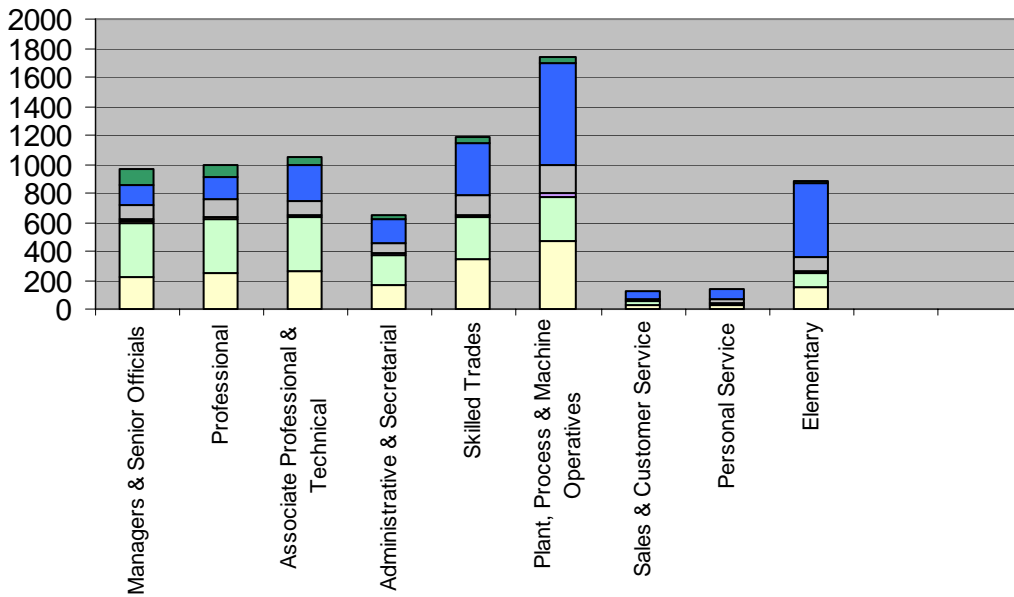


# Links To Residential Areas

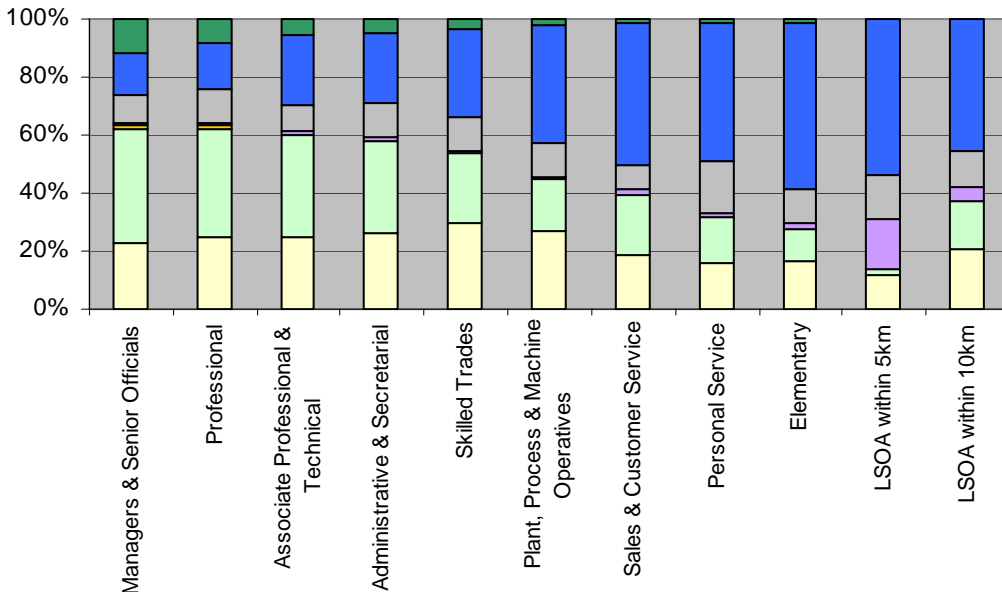
## Workforce Residential Area Type, by Standard Occupational Classification

(Sources: Census 2001 commuting data, ONS Area Classifications)

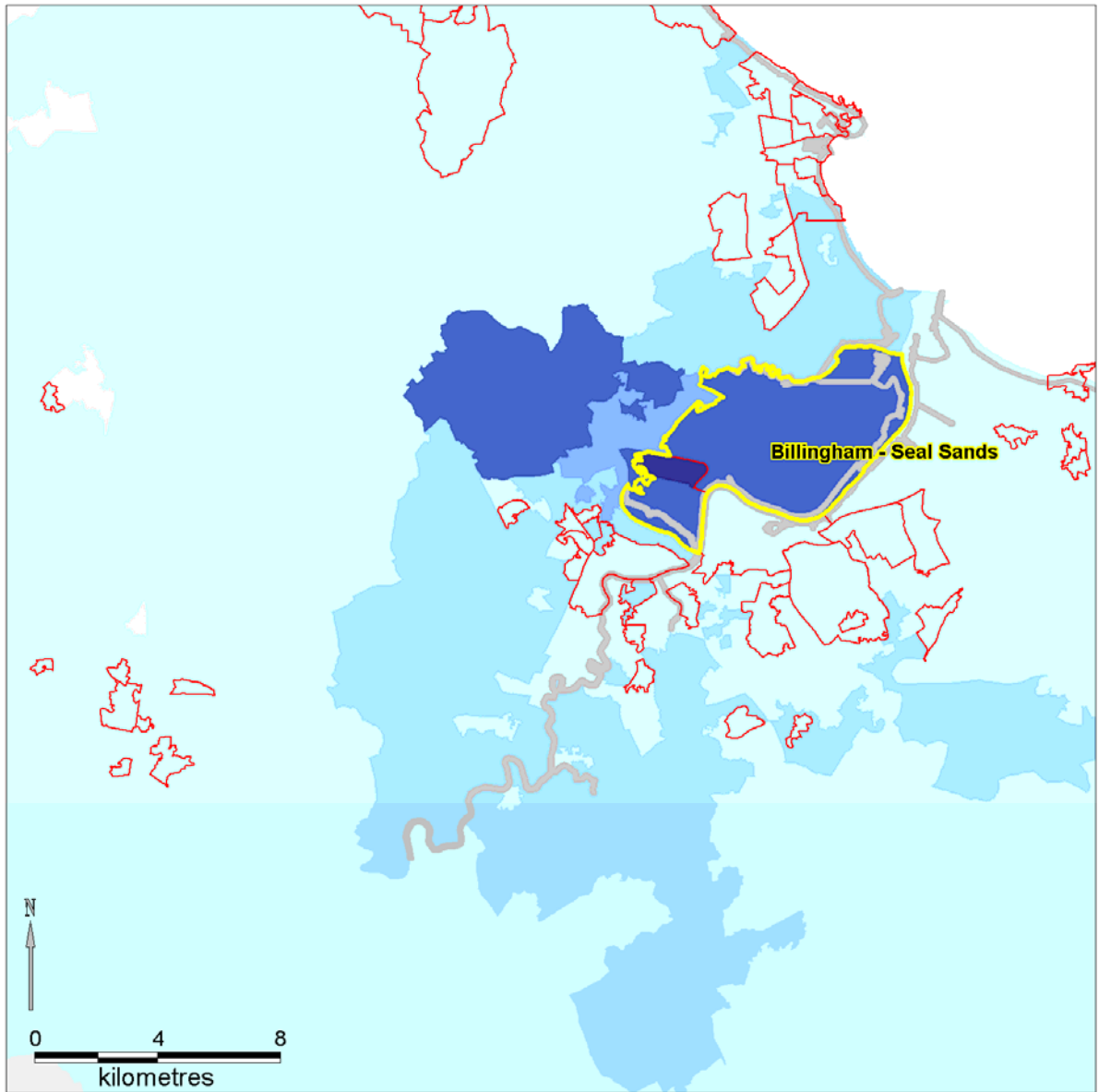
- Countryside
- Disadvantaged Urban Communities
- Miscellaneous built up areas
- Multicultural City Life
- Professional City Life
- Urban Fringe
- White Collar Urban



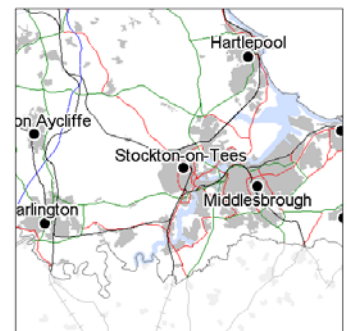
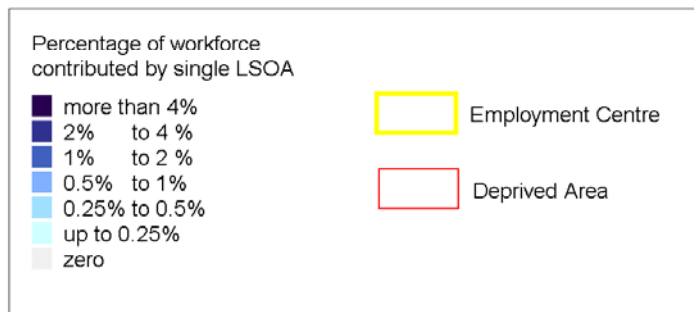
Count of workers

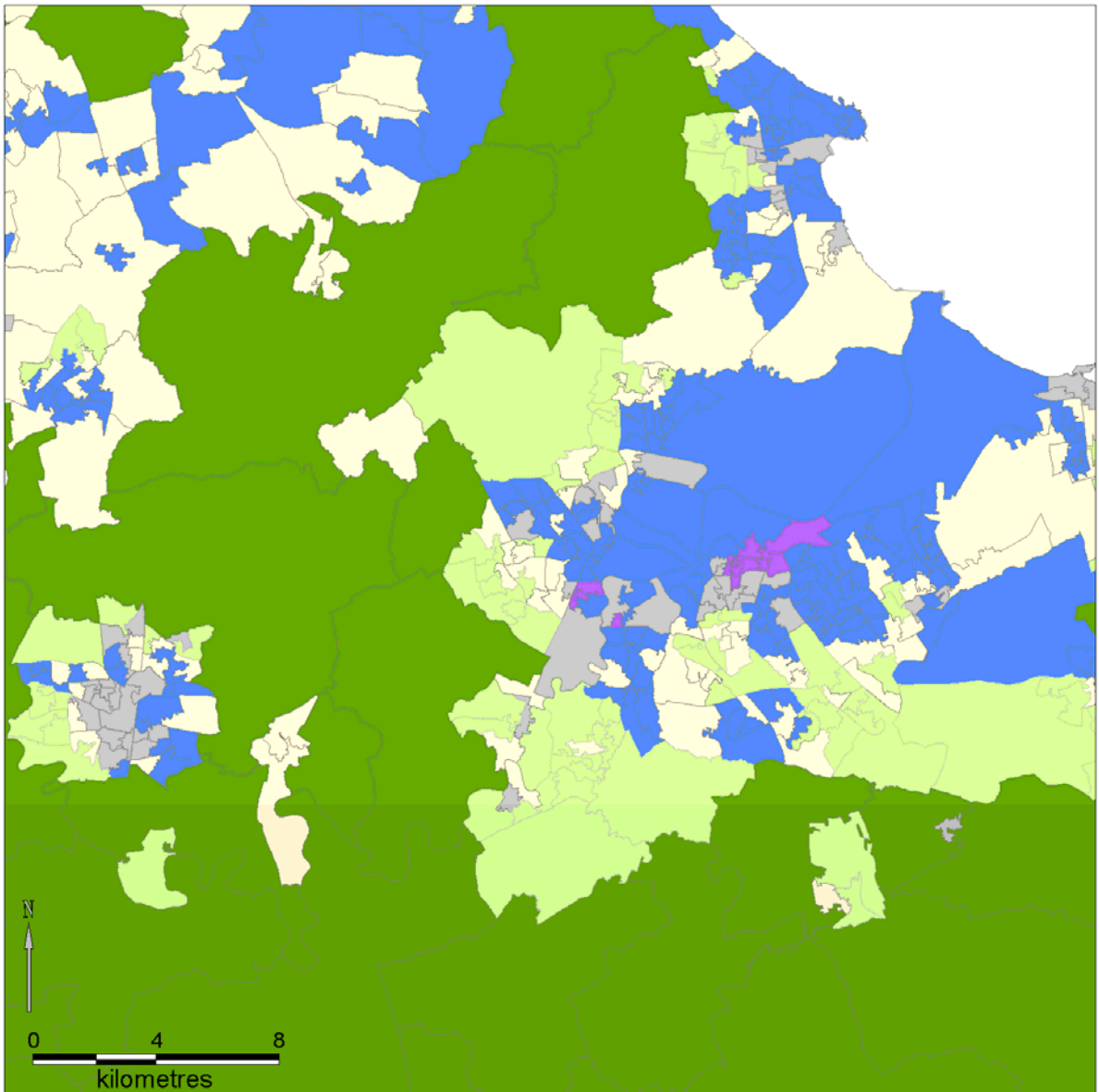


% of workers in SOC \ nearby LSOA

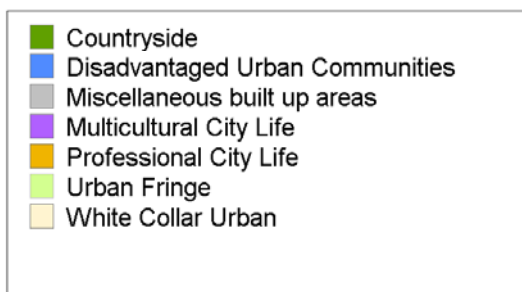


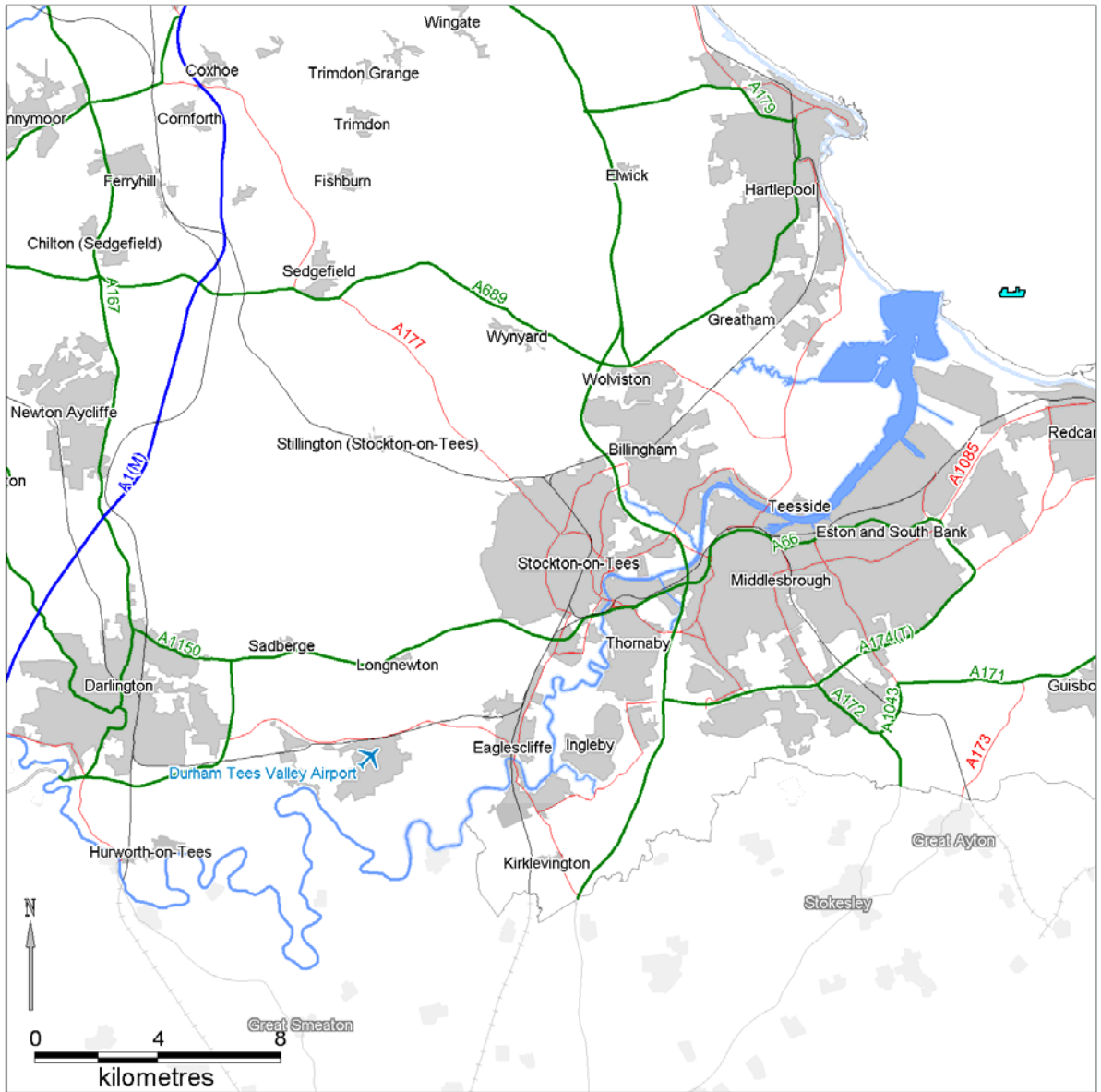
## Commuting footprint of employment centre





## ONS Area Classifications (supergroup level)





## Context and Key Locations

